

# Google Earth

## Exploration and Discovery

### What is it?

Google Earth is a free web-based environment that integrates digital imagery and digital information. As stated in Google Earth web site “Google Earth combines satellite imagery, maps and the power of Google Search to put the world's geographic information at your fingertips.” What makes Google Earth an interesting educational tool are its exploration and discovery capabilities which go well with the students’ curiosity and adventurous traits. Google Earth can be downloaded free from <http://earth.google.com/> and its installation is self-explanatory.

### What people do when they first install Google Earth?

- They normally search for their homes or schools by typing addresses and pressing the search button. (i.e. 1 Campus rd, Staten Island, NY)
- They fly to their favorite cities and explore new places. (Khartoum, Cape Town, LA or London)
- They create driving direction routes and more.

### Layers

Google Earth consists of a number of standard layers that add a wealth of information to users. For example, activating the 3D layer will enable you to fly between New York City’s Skyscrapers or through the Grand Canyon.

### Using Google Earth in the classroom:

Although Google Earth was released not long ago in the summer of 2005, teachers around the world are using it extensively in their classrooms and assigning projects to their students. Here are some suggestions to use Google Earth in the classroom:

- **History:** Take your class on a visual tour to the Pyramids in Cairo, Egypt. Ask your students to create presentations about European locations for historical events.
- **Geography:** A geography teacher may ask his/her students to create a virtual journey flying over the River Nile.
- **African Studies:** Assign projects to your students to construct tours for countries in the in the African Continent. Instruct your students to stop in every capital and add information about that country. Ask them to measure the distance between countries’ capitals (i.e. Asmara and Kano). The same can be adopted by a Middle Eastern Studies teacher.
- **Foreign Languages:** Fly to countries and create presentations that center around cultural and language issues. For example, an Arabic teacher may take his/her students in a virtual visit to Cairo and a Spanish teacher can do the same by taking her/his students to Cancun Mexico.

### Links to Google Earth related Web Sites:

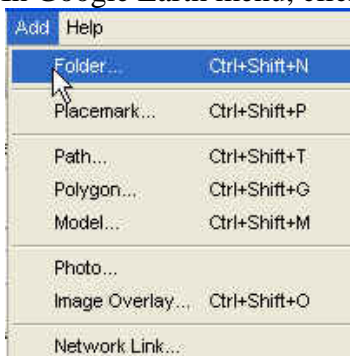
- The Journal of Education, Community, and value: How Digital Mapping Tools can change our perspective on learning: <http://bcis.pacificu.edu/journal/2006/02/szymanski.php#5>
- Google Earth Help Center: <http://earth.google.com/support>
- Google Earth Tutorial: <http://www.keyhole.com/GoogleEarthHelp/GoogleEarth.htm>
- Google maps can be found at: <http://googlemapsmania.blogspot.com/>
- Google Earth Blog [http://www.gearthblog.com/blog/archives/2006/08/back\\_to\\_school.html](http://www.gearthblog.com/blog/archives/2006/08/back_to_school.html)

## Creating a tour on Google Earth

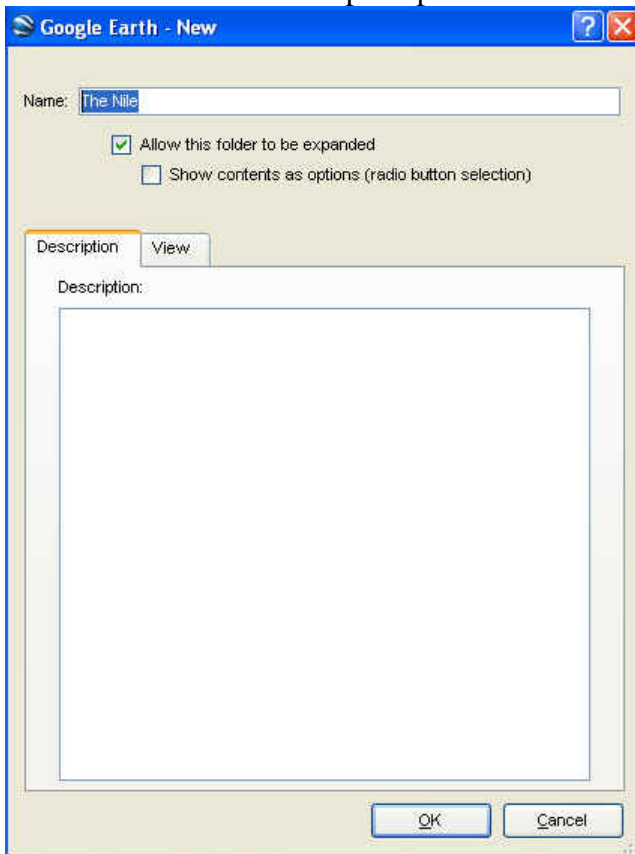
To develop a virtual tour using Google Earth you should first consider preparing (in writing) all the information that you would like to include in the tour. For example, constructing a virtual journey over the **River Nile** in Africa requires that you collect and write down information (geographical, environmental, political, economical ...etc) about places along the **River Nile** pathway. You may add web links to your story.


### Create a tour folder:

- In Google Earth menu, click on **Add** and then select **Folder** as shown below.

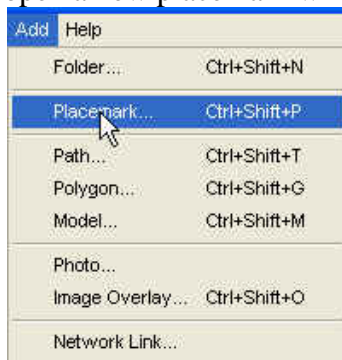


- Type a folder name and add description for your tour and click **OK**. The folder being created will contain the stops or placemarks of the tour.

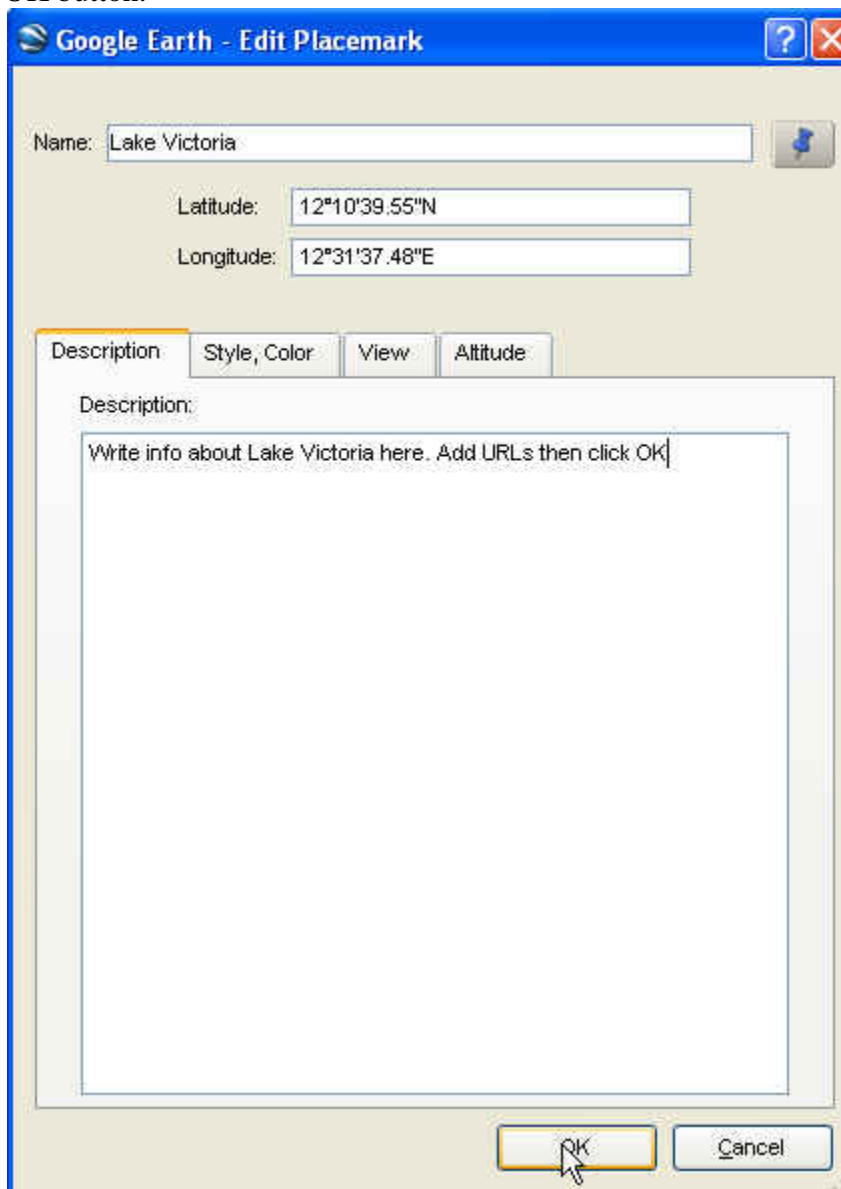


- To add a placemark to a folder, first make sure that the folder is open, click on **Add** in Google Earth menu and then select **Placemark**. Or by clicking the placemark icon in the upper right corner of the screen as shown below. Either option will a placemark  and

open a new placemark window.



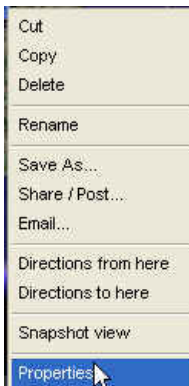
- In the Edit Placemark window type a name and description for the place and then click the OK button.



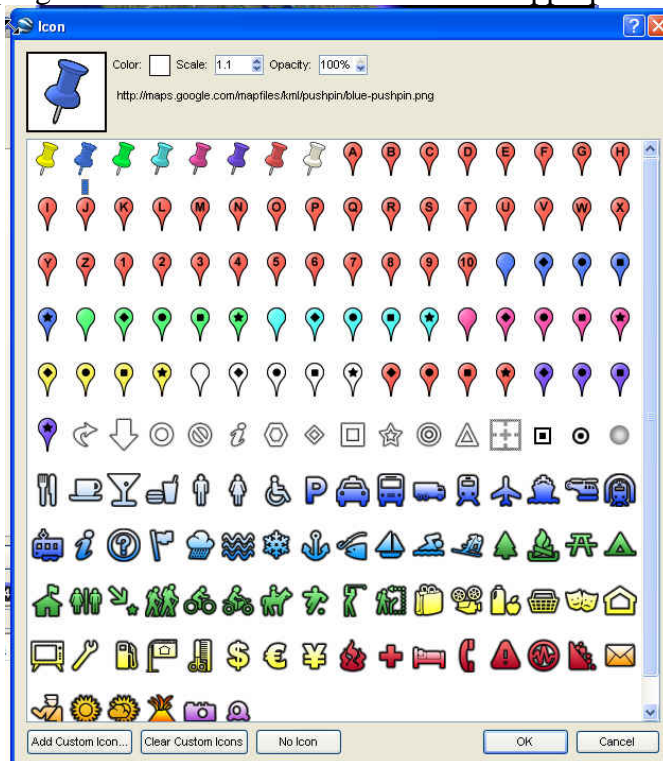
- At this point you can move the placemark and place it in the right geographical position in your tour pathway. Numbering the stops will help you later put them in sequence. Add information to describe the place. The description may include web links that further explain that place.



- To edit the information for a placemark, right click with the mouse on the placemark icon and then click on properties



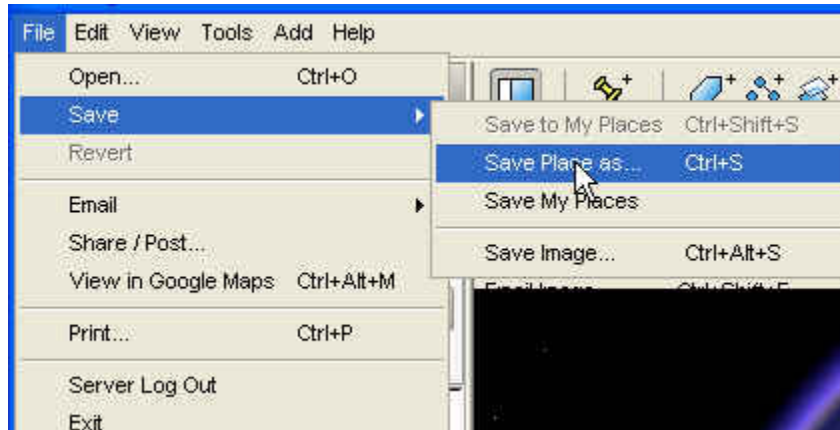
- To replace the placemark indicator click on the its icon in the top right corner of the program window to select the desired or appropriate icon as shown below:



- Follow the same steps to add the rest of your stops (placemarks). Make sure that you have all your stops put in the right sequence in the tour folder. The first stop should be at the top.

**Save your tour:**

- To save your tour first make sure that you have the tour folder as well as all the stops checked. Select the folder, click on the **File** menu then select the **Save AS** option as shown below:



- The **Save file** window will open as shown below. Type a file name and click the **Save** button.

